

PRELIMINARY CONCEPTS

Lowry Center Signage & Graphics



PERSPECTIVE

NTS

CLIENT/PROJECT:
College of Wooster
Master Campus Sign Plan

PROJECT NO.
COW-312

DATE:

REVISIONS:

SCALE:

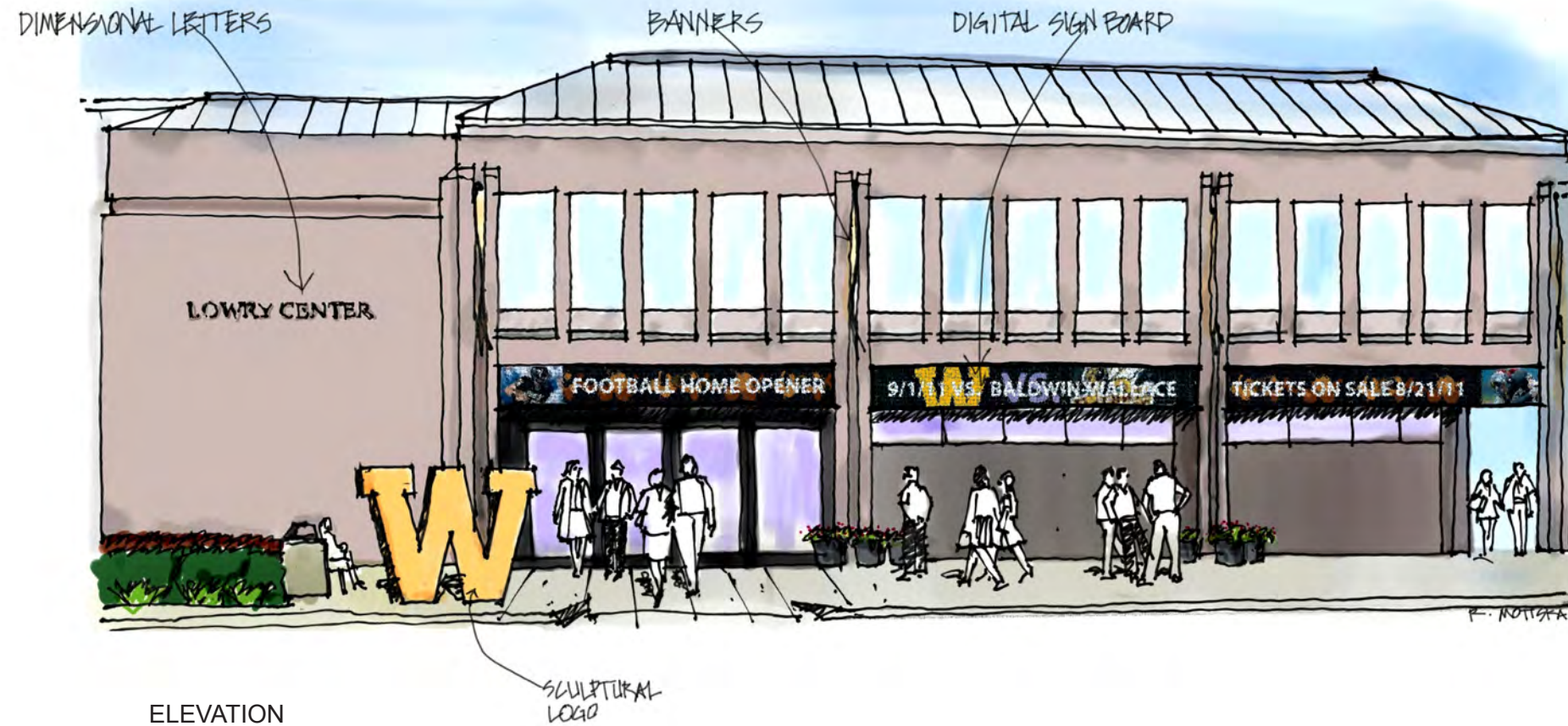
PRELIMINARY CONCEPTS

Lowry Center Signage & Graphics

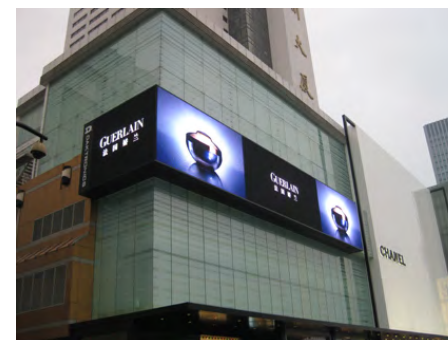
As the campus student center Lowry Center need to distinguish itself from the academic and residential buildings on campus. It is the common gathering place on campus; the heart of the school. It needs to have a brighter, festive atmosphere.

This concept moves the building name to the wall adjacent to the entry; using dimensional letters in either a bronze or gold finish. The black fascia of the building would incorporate a modular digital sign system; which can be utilized to provide information on campus activities and events.

To create a more festive atmosphere banners in the school colors replace the current flags. A large sculptural Wooster "W" adds to the festive atmosphere and creates a memorable iconic image for visitors.



ELEVATION
NTS



Modular digital signage example



PST-23

The ultimate touring partner, the PST23 offers the same industry-leading image processing and panel rigging as other PST products at a more economical price. The ideal solution for larger outdoor events and festivals where slightly longer viewing distances are appropriate.

Model number	PST23
Line and column spacing	23 mm (9")
Panel configuration	1 R, 1 O, 1 B LED
Subtotal brightness	2,000 nits (6000)
Panel configuration	40 x 54
Panel H x W (inches)	1,100 x 1,460 (43.31" x 57.48")
Panel weight (kg)	73.1 (161.2 lbs)
Horizontal viewing angle	140° (70° off-center) min.
Vertical viewing angle	40° (20° off-center) min.
Weatherproofing (optional)	P-65/P-64



LED sign modules

CLIENT/PROJECT:
College of Wooster
Master Campus Sign Plan

PROJECT NO.
COW-312

DATE:

REVISIONS:

SCALE: