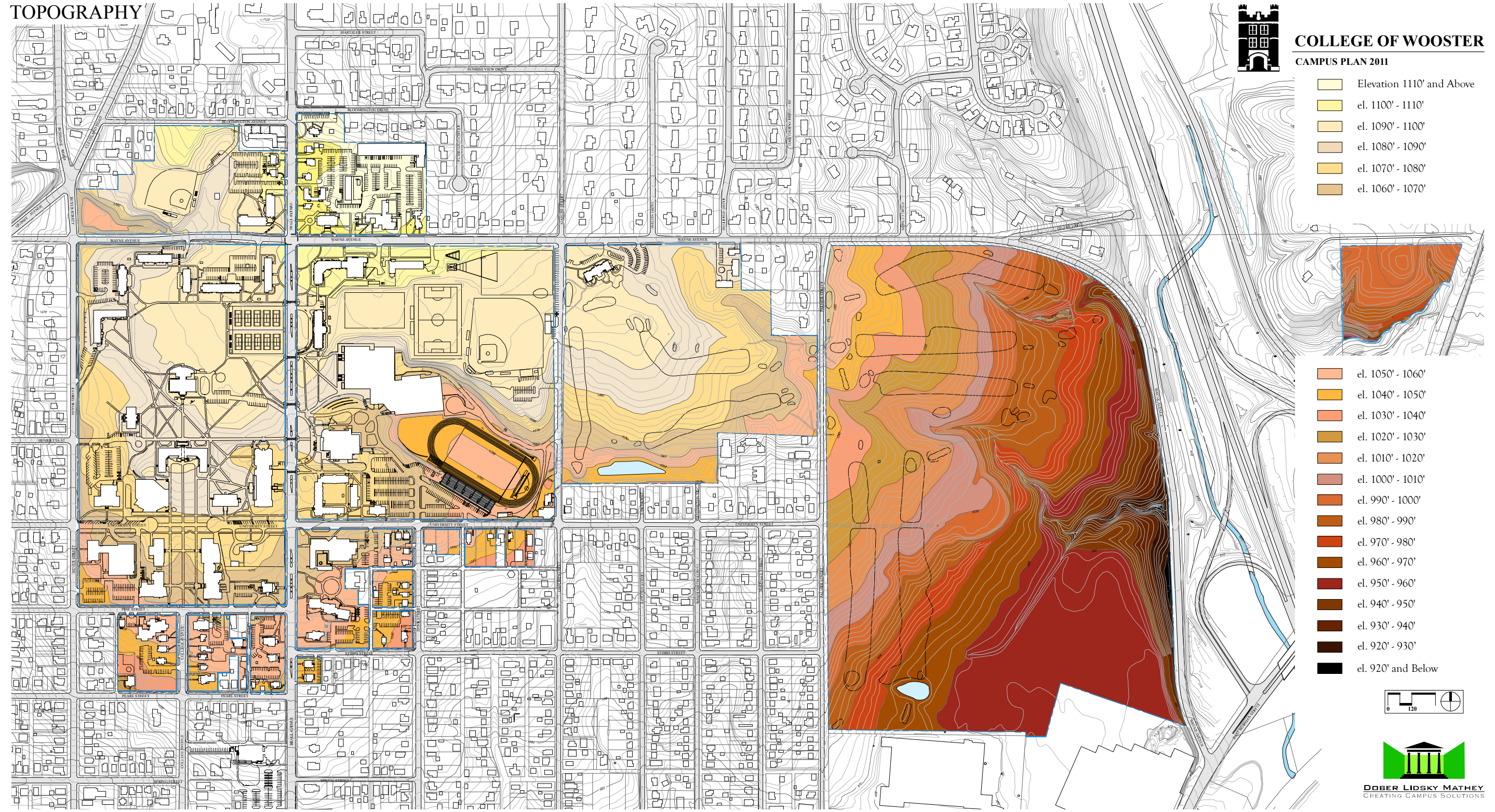


TOPOGRAPHY

This drawing illustrates the range of topographic elevations that characterizes the campus. Darker colors indicate lower elevations and lighter tones indicate higher elevations. Each color gradation represents a ten foot change in grade. The closer the bands of color are to each other, the steeper the slope. The lowest elevation, shown in black, is 920 feet and below and the highest, colored the palest yellow, is 1110 feet and above.

The topography falls from the northernmost part of campus to the south and southeast with a grade change of over 200 feet from the highest to the lowest elevation. On the core campus, the grade change is less than 100 feet.

TOPOGRAPHY



COLLEGE OF WOOSTER CAMPUS PLAN 2011

- Elevation 1110' and Above
- el. 1100' - 1110'
- el. 1090' - 1100'
- el. 1080' - 1090'
- el. 1070' - 1080'
- el. 1060' - 1070'

- el. 1050' - 1060'
- el. 1040' - 1050'
- el. 1030' - 1040'
- el. 1020' - 1030'
- el. 1010' - 1020'
- el. 1000' - 1010'
- el. 990' - 1000'
- el. 980' - 990'
- el. 970' - 980'
- el. 960' - 970'
- el. 950' - 960'
- el. 940' - 950'
- el. 930' - 940'
- el. 920' - 930'
- el. 920' and Below

